



**Elevator Equipment Corporation**  
 (888) 577-EECO - Fax: (323) 245-9771  
 www.elevatorequipment.com  
 www.eecovalves.com

# UV-5AT & UV-5ATC Quotation & Order Form

Request For Quote     Order, PO # \_\_\_\_\_

Company \_\_\_\_\_ Telephone (     ) \_\_\_\_\_

Contact \_\_\_\_\_ Fax (     ) \_\_\_\_\_

Date \_\_\_\_\_ Date Required \_\_\_\_\_

1. Quantity Required <sup>2</sup>

2. Coil Voltage <sup>2</sup>

3. Existing valve (If any): EECO UV-5A (Size)   
 Other (Mfg, model, size)

4. Static Pressure <sup>1</sup>  or Empty Car Weight (lbs)   
(psi), Empty car at bottom landing.  
 Plunger Diameter (in)   
 or Circumference (in)

5. Flow Rate (GPM) <sup>1</sup>  or Car Speed (FPM)   
Also need plunger info in #4 above.  
 Up   
 Down  If different

6. Max Operating Pressure (psi)  or Capacity (lbs)   
Required for UV-5ATC.  
Also need empty car weight info in #4 above.

7. Total Travel (ft)

8. Line Connections <sup>2</sup>    Pump    Jack    Return  
 2" NPT <sup>3</sup>                              
 2" Grooved <sup>4</sup>                       

9. Jack Port    Left Hand <sup>3</sup>     Right Hand <sup>4</sup>  (Contact EECO)

10. Constant Down Speed (UV-5ATC) <sup>4</sup>    Yes     No

11. Pressure Gage Quick Disconnect <sup>4</sup>    Jack     Pump

12. 0-1000 psi Liquid Filled Pressure Gage <sup>4</sup>    Yes     No

13. Low Pressure Switch <sup>4</sup>                            Yes     No

14. Roped Application Options:

(a) Modified Down Piston To Close At Low Pressure (less than 50 psi) <sup>4</sup>    Yes     No

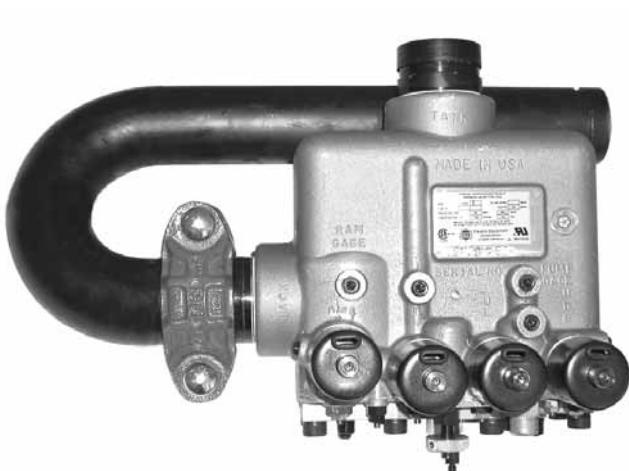
(b) Manual Lowering With Low Pressure Cutoff <sup>4</sup>                            Yes     No

15. Dual voltage down leveling coil for emergency (battery backup) lowering <sup>4</sup>    Yes     No

<sup>1</sup> Required for sizing, <sup>2</sup> Required, <sup>3</sup> Standard, <sup>4</sup> Optional

Please fax this form to EECO at (323) 245-9771

## Optional UV-5A Right Hand Jack Port Connection Adapter, P/N 5253





West Coast, 4035 Goodwin Avenue, Los Angeles, California 90039 - Telephone: (323) 245-0147 ♦ Fax: (323) 245-9771

East Coast & Mid-West, 2230 N. W. 12th Street, Richmond, Indiana 47374 - Telephone: (765) 966-7761 ♦ Fax: (765) 966-7299

# Request for Hydraulic Elevator Power Unit Quotation

Fax this completed form to EECO at: (323) 245-9771 (Los Angeles, CA) or (765) 966-7299 (Richmond, IN)

Customer \_\_\_\_\_

Date \_\_\_\_\_

\_\_\_\_\_

Contact \_\_\_\_\_

Project \_\_\_\_\_

Telephone (        ) \_\_\_\_\_

\_\_\_\_\_

Fax (        ) \_\_\_\_\_

Provide data as complete as possible. Our ability to provide proper equipment depends upon the completeness and accuracy of the data that you furnish.

### (A) For:

- In-ground     Holeless
- New Installation
- Modernization
- Replacement
- Repair
- Elevator is out of service

Ship date requested (be specific):

\_\_\_\_\_

### (B) Provide:

- Valve:
  - EECO     Other (specify): \_\_\_\_\_
- Submersible Unit (PUS Models)
- Dry (Belt Drive) Unit (PUD Models):
- Modified Design / Special Application**
- Hybrid (Belt Drive/Submersible) (PUH)
- Special / Custom Design (PUC Models)  
(See description of requirements below)
- Include Motor Starter
  - ATL
  - Y-Delta
  - Solid State
  - Mount on power unit
- 80 Start                       120 Start

### (C) Include Options:

- Muffler:
  - EECO     Other (specify): \_\_\_\_\_
- Constant Down Speed Valve
- Low Pressure Switch
- Oil Heater
- Thermostat to Activate Viscosity Control
- Pressure Switch for Load Weighing
  - Bypass     Dispatch
- Shut off valve
- Isolation Coupling
- Low Oil Switch
- Oil Cooler
- 5 Micron Filter System
- Hand Pump for Roped Hydro systems

### (D) Power Unit/Project Data

Capacity \_\_\_\_\_ lbs.

Piston O. D. \_\_\_\_\_

Power Supply \_\_\_\_\_ V    \_\_\_ Ph    \_\_\_ Hz

Gross Load \_\_\_\_\_ lbs.

or Circumference \_\_\_\_\_

Coil Voltage \_\_\_\_\_ V    1 Ph    \_\_\_ Hz

or Static Pressure with Empty car:

Car Speed \_\_\_\_\_ fpm

or  DC

\_\_\_\_\_ psi.

or GPM Req'd \_\_\_\_\_

Existing H. P. (if available) \_\_\_\_\_ H.P.

Floor to floor travel \_\_\_\_\_ ft. \_\_\_\_\_ in.

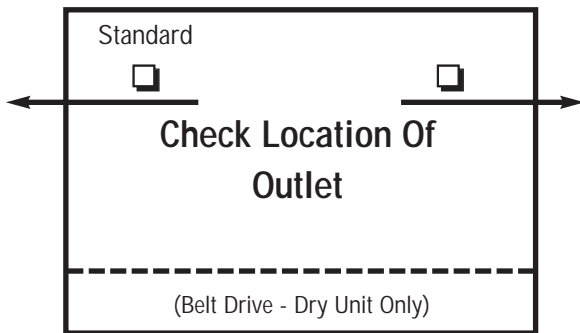
H. P. of new unit to be the same as

\*Overtravel \_\_\_\_\_

existing unit.

\*\*Undertravel \_\_\_\_\_

\*Overtravel is with the piston against stop ring. \*\*Undertravel is with the piston bottomed out.



Front of Power Unit

- ◆ Indicate location of the oil line outlet (right or left side)
- ◆ Existing oil line size \_\_\_\_\_ in.
- ◆ Grooved outlet is standard
  - Provide optional male thread
- ◆ Machine room door size \_\_\_\_\_ in. wide
- ◆ Are there any conditions which would require a special power unit size or arrangement. If so, explain: \_\_\_\_\_

\_\_\_\_\_  
\_\_\_\_\_  
\_\_\_\_\_

**Please photocopy this form as required.**

Customer Service: (888) 577-EECO (3326) ♦ E-mail: sales@eeco-mail.com ♦ Web Site: www.elevatorequipment.com & www.eecovalves.com



Elevator Equipment Corporation

4035 Goodwin Avenue, Los Angeles, CA 90039 - (800) 423-2800  
2230 N.W. 12th Street, Richmond, IN 47374 - (800) 428-6564  
LA Fax: (323) 245-9771 - Richmond IN Fax: (765) 966-7299  
www.elevatorequipment.com  
www.eecovalves.com

# UV-7B & UV-7BC Quotation & Order Form

Request For Quote     Order, PO # \_\_\_\_\_

Company \_\_\_\_\_ Telephone (    ) \_\_\_\_\_

Contact \_\_\_\_\_ Fax (    ) \_\_\_\_\_

Date \_\_\_\_\_ Date Required \_\_\_\_\_

1. Quantity Required <sup>2</sup>

2. Coil Voltage <sup>2</sup>

3. Existing valve (If any): EECO UV-7B (Size)   
Other (Mfg, model, size)

4. Static Pressure <sup>1</sup>  or Empty Car Weight (lbs)   
(psi), Empty car at bottom landing. Plunger Diameter (in)   
or Circumference (in)

5. Flow Rate (GPM) <sup>1</sup>  or Car Speed (FPM) Up   
Also need plunger info in #4 above. Down   
If different

6. Max Operating Pressure (psi)  or Capacity (lbs)   
Required for UV-7BC. Also need empty car weight info in #4 above.

7. Total Travel (ft)

8. Line Connections <sup>2</sup> Pump Jack Return  
2.5" NPT <sup>3</sup>     
2.5" Grooved <sup>4</sup>

9. Constant Down Speed (UV-7BC) <sup>4</sup> Yes  No

10. Pressure Gage Quick Disconnect <sup>4</sup> Jack  Pump

11. Valve Cover <sup>4</sup> Yes  No

12. 0-1000 psi Liquid Filled Pressure Gage <sup>4</sup> Yes  No

13. Low Pressure Switch <sup>4</sup> Yes  No

14. Manual lowering With Low Pressure Cutoff for Roped Applications<sup>3</sup> Yes  No

<sup>1</sup> Required for sizing, <sup>2</sup> Required, <sup>3</sup> Standard, <sup>4</sup> Optional

Please fax this form to EECO at (323) 245-9771



2.5" NPT ports standard



UV-7B with optional Valve Cover.



UV-7B with optional 2.5" grooved connections.



# Request for Hydraulic Elevator Jack Unit Quotation

Fax this completed form to EECO at: (323) 245-9771 (Los Angeles, CA) or (765) 966-7299 (Richmond, IN)

Customer \_\_\_\_\_

Date \_\_\_\_\_

\_\_\_\_\_

Contact \_\_\_\_\_

Project \_\_\_\_\_

Telephone (        ) \_\_\_\_\_

\_\_\_\_\_

Fax (        ) \_\_\_\_\_

Provide data as complete as possible. Our ability to provide proper equipment depends upon the completeness and accuracy of the data that you furnish.

**(A) For:**

- In-ground     Holeless
- New Installation
- Modernization
- Replacement
- Repair
- Elevator is out of service

Ship date requested (be specific): \_\_\_\_\_

Special requirements: \_\_\_\_\_

\_\_\_\_\_

**(B) Provide:**

- Complete jack unit
- Cylinder only
- Cylinder with head
- Piston only

Number of sections required or longest possible section length to install: \_\_\_\_\_

**Cylinder**

- Threaded         Slip Weld
- Butt weld

All cylinder joints should be welded after assembly!

**(C) Include Options:**

- Tape Wrap     Epoxy
- PVC         sch40     sch80
- Leak monitor system
- Provision for future travel
- Platen         Isolated
- Pit Channels     Buffers
- Pipe Rupture Valve:
  - Threaded         Grooved
- Shut Off Valve, Qty: \_\_\_\_\_
  - Threaded         Grooved
- Scavenger System
- Provision for plunger gripper
- Spare repacking kit

**(D) Jack/Project Data**

Capacity \_\_\_\_\_ lbs.

Floor to floor travel \_\_\_\_\_ ft. \_\_\_\_\_ in.

Piston O. D. \_\_\_\_\_

Car Weight \_\_\_\_\_ lbs.

Top Over travel\* \_\_\_\_\_

or Circumference \_\_\_\_\_

Piston Weight \_\_\_\_\_ lbs.

Bottom Under travel\*\* \_\_\_\_\_

Piston Wall \_\_\_\_\_

Total Gross \_\_\_\_\_ lbs.

\* Over travel is with the piston against stop ring.  
\*\* Under travel includes run-by, spring compression and bottom clearance.

Cylinder O. D. \_\_\_\_\_

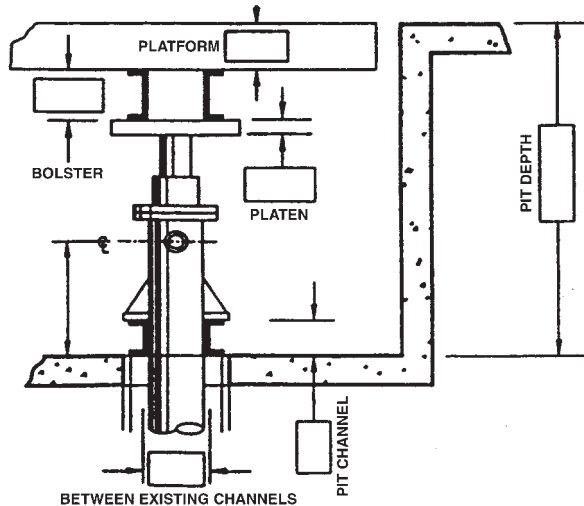
Speed \_\_\_\_\_ fpm

or Circumference \_\_\_\_\_

Cylinder to fit within existing \_\_\_\_\_ inch I. D. casing.

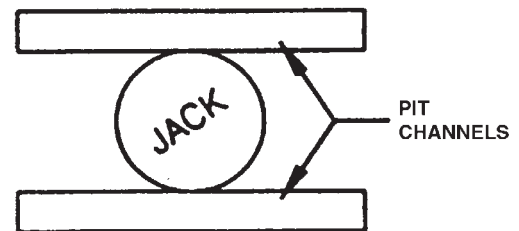
**In-Ground Installation**

Complete as applicable (these dimensions are not required for quotation).



Oil Line Outlet Size: \_\_\_\_\_

- Threaded or     Grooved



Indicate location of oil line outlet.

**Please photocopy this form as required.**