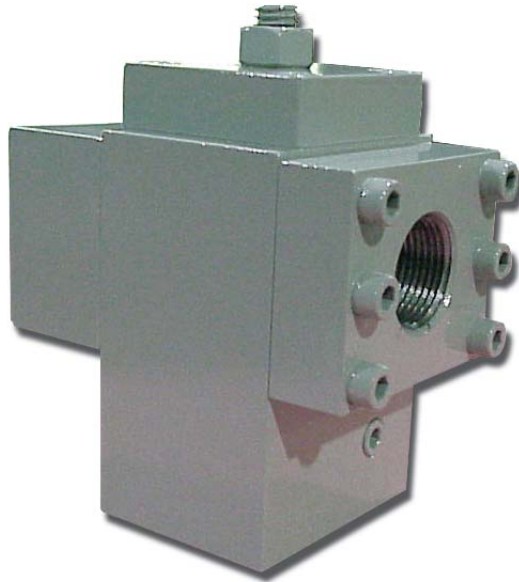


Pipe Rupture Valve



Safety First!

If the unthinkable happens, are you ready? The EECO Pipe Rupture Valve (PRV) is a simple but effective way to achieve a quick and smooth stopping of a car if an overspeed of the elevator should occur. The EECO PRV is connected directly to the pressure line between the control valve and the jack. The supplied connections on the PRV make installation quick and easy.

This PRV is operationally reliable and easy to adjust. The PRV comes with either NPT or grooved connections in either 3/4 inch or 2 inch ports. Bringing the elevator to a slow stop is the standard operation of the valve. Having the elevator slow to a down creep is an optional configuration of the valve.

Don't compromise your passenger's safety. The EECO PRV is a cost effective insurance policy for any hydraulic elevator system.

Features

- **Maximum 1500 PSI**
- **Maximum 26 GPM For 3/4" Connection, 208 GMP For 2" Connection**
- **NPT Or Grooved Connectons**
- **Manufactured To EECO's Rigid Engineering Standards**
- **Smooth, Consistent Performance**
- **100% Quality Inspected**
- **Priced Right for New Construction and System Modernization**

(888) 577-3326

www.elevatorequipment.com



Elevator Equipment Corporation